



SIS 2.0 SLD Quick Start Guide



Industrial Power Systems Division
© Proprietary Information of Caterpillar Inc. 2021 - All Rights Reserved

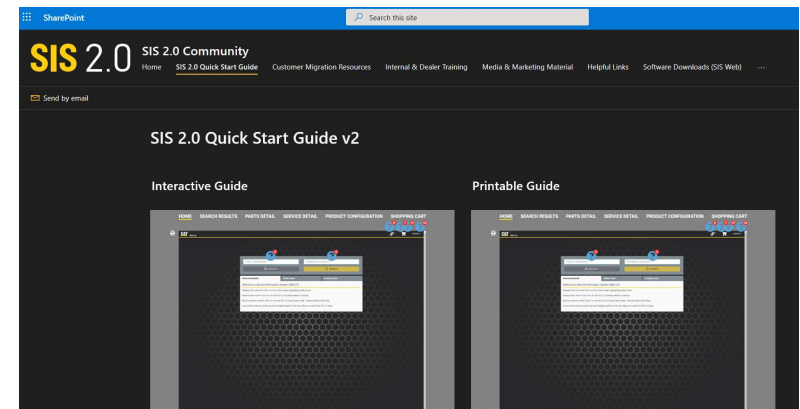


Service Information System 2.0- <https://sis2.cat.com>

- SIS 2.0 is optimized to work with Google Chrome. Other compatible web browsers include Apple Safari and Mozilla Firefox and Microsoft Edge with Chromium.
 - Browsers such as Microsoft Edge and Internet explorer are not supported. They may be used but could impact speed and functionality.

Click links below to go straight to additional resources!


- [Channel 1 training videos](#)
- [Caterpillar Sharepoint training information](#)
- [Caterpillar Sharepoint Quick Start Guide](#)
 - Quick start guide offers key differences on each screen between SIS 2.0 & SIS




SIS 2.0 Quick Start Demo

Enter Engine serial number or Prefix in here. Press Navigate.

If you hit enter after inputting your serial number, it will do a search similar to an advanced full text search on SIS.

 NAVIGATE

 SEARCH

Announcements

External Links

Coming Soon

Welcome to Service Information System (SIS) 2.0

Release 57 is now live! This [short video](#) demonstrates the new features included.

Not sure where to start? Click [here](#) for the SIS 2.0 Quick Start Guide, Training Videos and FAQs.

Want to learn more? Click [here](#) for the SIS 2.0 quarterly webinar schedule.

IMPORTANT PRINTING INFORMATION: One time update needed to display content when printing.

- Chrome users:** Settings (3 dots in top-right corner) > Print > More Settings > Background Graphics - check this box
- Edge users:** Settings and more (3 dots in top-right corner) > Print Options > Background Graphics - check this box
- Firefox users:** "Hamburger" (3 bars) > Print > Page Setup > Print Background - check this box

To filter for only your truck engine configuration toggle this to off as shown below.



After entering your engine serial number, you will see the Engine-Entire Group. If you click on this part number, it will take you to the engine arrangement parts breakdown.

Engine - Truck > Truck Engine > C15 > MXS

Service

Service Letters (PIP/PS) SIMS TMI

C15_TRUCK Engine
Engine Serial Number - MXS32755
Engine Build Date - 2005/04/25

Engine - Entire Group (MXS32755)

Part Number	Change Level	Part Name
261-5245	02	Engine AR-Complete

CAT SIS 2.0 MXS32755 Keyword

Engine - Truck > Truck Engine > C15 > MXS

Parts Service

All Configurations

Systems And Components

- Air Inlet And Exhaust System
- Chronic Engine
- Cooling System
- Electrical And Starting System
- Enclosures, Guards And Bases
- Engine Arrangement
- Engine AR
 - 261-9200 Engine AR-Complete
 - 261-9685 Engine AR-Complete
 - 261-9712 Engine AR-Complete
 - 260-9162 Engine AR-Complete
 - 260-8250 Engine AR-Complete
 - 260-2734 Engine AR-Complete
 - 260-2735 Engine AR-Complete
 - 260-2736 Engine AR-Complete
 - 260-2737 Engine AR-Complete
 - 260-2738 Engine AR-Complete
 - 260-2739 Engine AR-Complete
 - 260-2806 Engine AR-Complete
 - 260-2809 Engine AR-Complete
 - 260-2815 Engine AR-Complete

No Part Image Available

Group & Individual Parts Options

Entire Group SMCS Code 1000 - Engine

261-5245 ENGINE AR-COMLETE
S/N MXS357-99999; NXS1-31301
354 BRAKE KW (475 BHP) AT 2100 RPM. PACCAR, CAT COMPRESSION BRAKE

Alternate

Part Number	Part Name	Quantity Req'd
247-814	Actuator GP-Valve	1
222-879	Air Compressor GP	1
248-903	Support GP-Radiator	1

By clicking Alternate here, You will see the reman repair options for this arrangement group.

Entire Group SMCS Code 1000 - Engine

261-5245 ENGINE AR-COMLETE
S/N MXS357-99999; NXS1-31301
354 BRAKE KW (475 BHP) AT 2100 RPM. PACCAR, CAT COMPRESSION BRAKE

Alternate ^

Part Number	Part Name	Quantity Req'd
Reman		
10R-4404	Short Block	0 <input type="text"/> +
10R-4412	Long Block	0 <input type="text"/> +
10R-8767	Engine AR-Compl	0 <input type="text"/> +
20R-9106	Long Block	0 <input type="text"/> +

Industrial Power Systems Division

© Proprietary Information of Caterpillar Inc. 2021 - All Rights Reserved

Other kit options are also listed here. This is also where Overhaul/ Precious metal kits can be found.

Engine - Truck > Truck Engine > C15 > MXS

Parts Service

All Configurations

Systems And Components

- Air Inlet And Exhaust System
- Basic Engine
- Cooling System
- Electrical And Starting System
- Enclosures, Guards And Bases
- Engine Arrangement
- Engine AR
- Fuel System
- Lubrication System
- Operator Station
- Service Equipment And Supplies
- Kit - Upgrades**
- Kit - Repairs/service**
- Kit - Unknown**

No Part Image Available

Group & Individual Parts Options

Entire Group SMCS Code 1000 - Engine

261-5245 ENGINE AR-COMLETE
S/N MXS357-99999; NXS1-31301
354 BRAKE KW (475 BHP) AT 2100 RPM. PACCAR, CAT COMPRESSION BRAKE

Alternate

Individual Parts Service Articles Where Used

Part Number	Part Name	Quantity Req'd
247-3814	Actuator GP-Valve	1
222-2879	Air Compressor GP	1
249-8803	Support GP-Radiator	1
249-8735	Bracket GP-Mounting	1
159-9107	Connection GP-Electrical (Cylinder Head Ground)	1
229-6712	Connection GP-Electrical (Cylinder Block Ground)	1
246-9347	Control & Mtg GP-Engine Elek	1
107-6737	Cover GP-Cylinder Block	1
159-6159	Cover GP-Front Housing (Cam, 198r Gear)	1
239-4113	Cover GP-Valve Mechanism	1
111-8317	Damper GP	1

Engine - Truck > Truck Engine > C-15 > 6NZ

Parts Service

Kit - Unknown

- 102-8801 Kit-Receptacle
- 102-8802 Kit-Receptacle
- 102-8803 Kit-Receptacle
- 102-8805 Kit-Receptacle
- 103-8134 Kit-Receptacle
- 143-6628 Kit-Engine Brake
- 144-0502 Kit-Piston Ring
- 164-2025
- Kit - Lower Structure
- 380-1554 Kit-Piston & Ring
- 381-0872 Bridge-Valve
- 10R-8500 Injector-Kit
- 10R-9343 Kit-Engine Overhaul**
- 13R-2987

Group & Individual Parts

Entire Group

10R-9343 Kit-Engine Overhaul

Individual Parts

Price And Availability

Part Number	Part Name	Quantity	Reqd		
0R-8915	Cylinder Pack AS	6	6	+	ⓘ
541-9377	Plate-Engine	1	1	+	ⓘ
10R-9343	Engine Kt-Ovhl	0	0	+	ⓘ
603-6644	Engine Kt-Ovhl				

Part Name	Service Part Number	Where Used Or Sized
OVERHAUL GP-ENG 10R9380		GOLD OVERHAUL KIT HTTPS://TRUCK.CAT.COM/CONTENT/DAM/TRUCK/TEPS-MARKETING/BROCHURES/PRECIOUS%20METALS%20KITS%20FOR%20TRUCK%20ENGINES%20-%201-7-2020.PDF REMAN SERV REPAIR FOR 1807352 FOR THE FOLLOWING S/N'S

10R-9343 - Engine Kt-Ovhl

Numerical Part Record Inquiry

10R-9343
> 00 (US United States)

Weight: 350.53 Lbs, 159 Kg

NOTICE: Numerical Parts Record information is independent of the current product context. Part numbers listed may not apply to this specific application. Please click to search for any available information within the current product context or contact the GDSN Parts Technical Group for assistance.

Part Name	Service Part Number	Where Used Or Sized
OVERHAUL GP-ENG 10R9380		GOLD OVERHAUL KIT HTTPS://TRUCK.CAT.COM/CONTENT/DAM/TRUCK/TEPS-MARKETING/BROCHURES/PRECIOUS%20METALS%20KITS%20FOR%20TRUCK%20ENGINES%20-%201-7-2020.PDF REMAN SERV REPAIR FOR 1807352 FOR THE FOLLOWING S/N'S

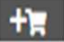
Quantity	Serial	Effective	Discontinued
1	06NZ	58640	

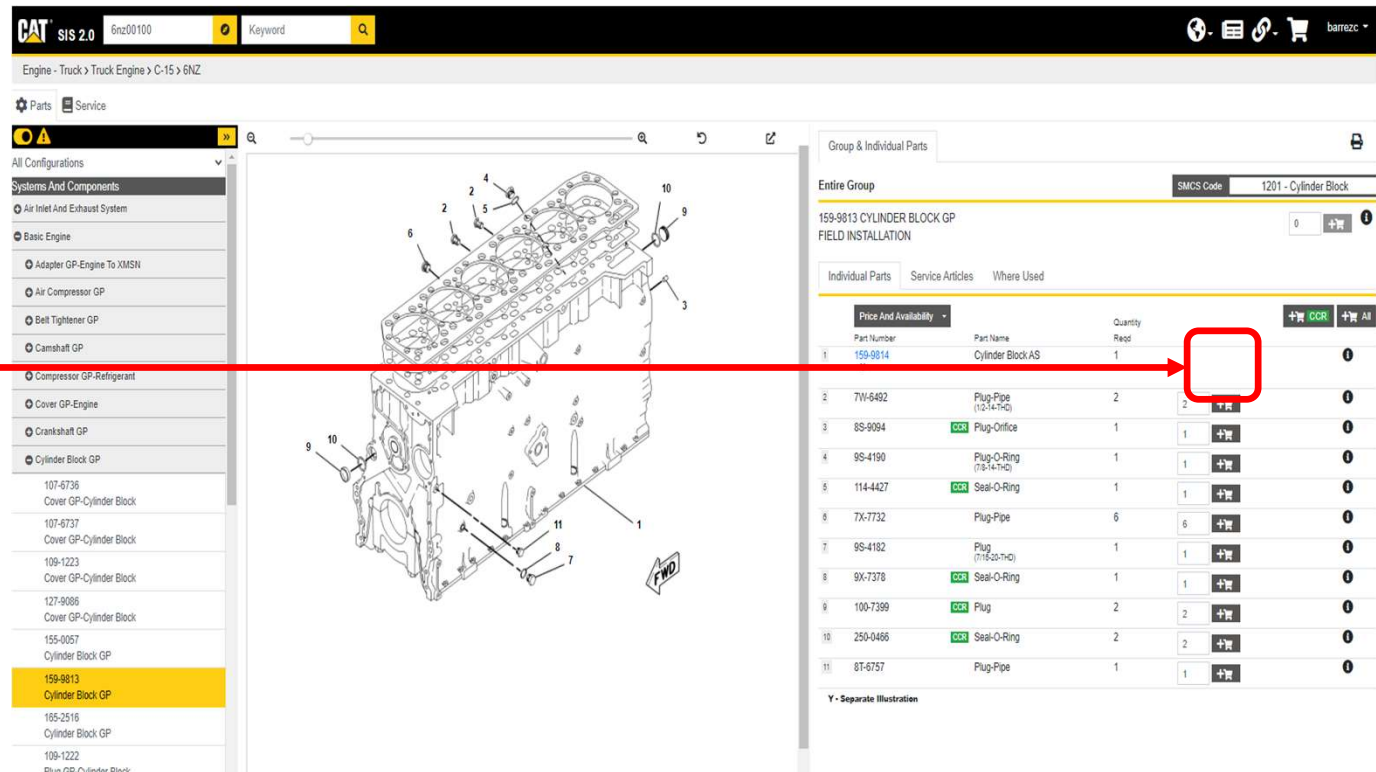
Quantity	Group Part	Eng. Chg
1	3487155 *	00

10R-9380 Overhaul GP- [↗](#)

10R-9343 Kit-Engine Overhaul

OK

If a Part Number does not have a  next to it, that part is not serviced by itself. In other words, you will need to break it down into individual components.



Engine - Truck > Truck Engine > C-15 > 6NZ

Parts Service

All Configurations

Systems And Components

- Air Inlet And Exhaust System
- Basic Engine
 - Adapter GP-Engine To XMSN
 - Air Compressor GP
 - Belt Tightener GP
 - Camshaft GP
 - Compressor GP-Refrigerant
 - Cover GP-Engine
 - Crankshaft GP
 - Cylinder Block GP
 - 107-6736 Cover GP-Cylinder Block
 - 107-6737 Cover GP-Cylinder Block
 - 109-1223 Cover GP-Cylinder Block
 - 127-9086 Cover GP-Cylinder Block
 - 155-0057 Cylinder Block GP
 - 159-9813 Cylinder Block GP**
 - 165-2516 Cylinder Block GP
 - 109-1222 Plug GP-Cylinder Block

Group & Individual Parts

Entire Group SMCS Code 1201 - Cylinder Block

159-9813 CYLINDER BLOCK GP
FIELD INSTALLATION

Individual Parts Service Articles Where Used

Part Number	Part Name	Quantity Req'd	Price And Availability	Service Articles	Where Used	+	CCR	All
1 159-9814	Cylinder Block AS	1						
2 7W-6492	Plug-Pipe (13.4x4)	2						
3 8S-9094	Plug-Orifice	1	CCR					
4 9S-4190	Plug-O-Ring (13.4x4)	1						
5 114-4427	Seal-O-Ring	1	CCR					
6 7X-7732	Plug-Pipe	6						
7 9S-4182	Plug (11.6x2.7x1)	1						
8 9X-7378	Seal-O-Ring	1	CCR					
9 100-7399	Plug	2	CCR					
10 250-0466	Seal-O-Ring	2	CCR					
11 8T-6757	Plug-Pipe	1						

Y - Separate Illustration

CAT SIS 2.0 6NZ00050 Keyword

Engine - Truck > Truck Engine > C-15 > 6NZ

Filters Apply 1 - 50 of 3,647 results

Warning: No Product Configuration data to display

179-3590 Drive GP-Accessory
 179-3590 DRIVE GP-ACCESSORY
 SIN 6NZ1-99999
 PROVIDES AN 8 RIB POLY-VEE ALT/FAN DRIVE WITH 2100 RPM FULL POWER CAPACITY, A SEPARATE 6 RIB POLY-VEE BELT DRIVE PROVIDES LIMP HOME CAPABILITY WITH A/C COMPRESSOR SEIZURE FOR USE WITH 145-9326, 180-5167 ALSO AN ATTACHMENT
 2004/06/11

176-7716 Turbocharger GP
 176-7716 TURBOCHARGER GP
 SIN 6NZ1-95124
 PART OF 176-9829 TURBOCHARGER GP
 2000/08/08
 Price And Availability

139-6941 Base GP-Fuel Filter
 139-6941 BASE GP-FUEL FILTER
 SIN 6NZ1-99999
 PART OF 137-5597 PUMP GP-FUEL PRM & SEC FILTER
 AN ATTACHMENT
 2008/07/27

156-5783 Valve GP-Check -Fuel
 156-5783 VALVE GP-CHECK -FUEL
 SIN 6NZ1-99999
 PART OF 139-6941, 159-9491 BASE GP-FUEL FILTER
 ALSO AN ATTACHMENT
 2008/01/23

194-6722 Sensor GP-Pressure
 194-6722 SENSOR GP-PRESSURE
 ©2021 Caterpillar Inc. Privacy & Legal

Date
 All
 Last 7 Days
 Custom Range

Information type
 Applied Failure Analysis (11)
 Bench Test Procedures (2)
 Contamination Control Guidelines (2)
 Disassembly And Assembly (146)
 Engine News (141)
 General Service Information (73)
 Information Release Memo (208)
 Operation And Maintenance Manual (167)
 Reuse And Salvage Guidelines (95)
[Show More](#)

Systems
 Air Inlet And Exhaust System (111)
 Basic Engine (651)
 Braking System (13)
 Controls (1)
 Cooling System (132)
 Electrical And Starting System (547)
 Electrical System (29)

For Quick access to Parts Identification click on the Gear Icon at the top or select Parts Identification and click apply.

CAT SIS 2.0 6NZ00050 Keyword

Engine - Truck > Truck Engine > C-15 > 6NZ

Parts Service

All Configurations

Systems And Components

- Air Inlet And Exhaust System
- Basic Engine
 - Adapter GP-Engine To XMSN
 - Air Compressor GP
 - Belt Tightener GP
 - Camshaft GP
 - Compressor GP-Refrigerant
 - Cover GP-Engine
 - Crankshaft GP
 - Cylinder Block GP
 - Cylinder Head GP

159-8655
Cylinder Head GP

557-4756
Fastener GP-Cylinder Head

592-7274
Kit-Cylinder Head Gasket

592-7300
Kit-Cylinder Head Gasket

592-7328
Kit-Cylinder Head Gasket

592-7345
Kit-Cylinder Head Gasket

Group & Individual Parts

Entire Group SMCS Code 1100 - Cylinder Head Assembly

159-8655 CYLINDER HEAD GP
S/N 6NZ1-22194

Individual Parts Service Articles Where Used

Price And Availability		Quantity		
Part Number	Part Name	Reqd		
1 130-9811	Sensor GP-Temperature (Intake Manifold Air)	1	1	+ -
2 161-9929 Y	Sensor GP-Pressure (Air)	1	1	+ -
3 8T-6763	Plug-Pipe (1/4-18-THD)	1	1	+ -
4 224-5122	Gasket (Cylinder Head)(Cylinder Head)	1	1	+ -
5 160-4347 Y	Cylinder Head GP	1	1	+ -
Alternate				
6 160-4347 Y	Cylinder Head GP	1	1	+ -
7 3E-6772	Seal (Water)	24	24	+ -
8 124-1855	BOLT-12 Point Head (3/4-16X7.638-III)	16	16	+ -
8A 5H-1504	Washer-Hard (20X33.5X5-MM Thk)	16	16	+ -
9 6V-5048	Seal-O-Ring	1	1	+ -
10 6V-5049	Seal-O-Ring	5	5	+ -

If you want to find the Reman Part number for # 5 in the graphic. Clicking Alternate if available will show that number.

CAT SIS 2.0 6NZ00050 Keyword

Engine - Truck > Truck Engine > C-15 > 6NZ

Parts Service

All Configurations

Systems And Components

- Air Inlet And Exhaust System
- Basic Engine
- Adapter GP-Engine To XMSN
- Air Compressor GP
- Belt Tightener GP
- Camshaft GP
- Compressor GP-Refrigerant
- Cover GP-Engine
- Crankshaft GP
- Cylinder Block GP
- Cylinder Head GP
- 159-8655
Cylinder Head GP
- 557-4756
Fastener GP-Cylinder Head
- 592-7274
Kit-Cylinder Head Gasket
- 592-7300
Kit-Cylinder Head Gasket
- 592-7328
Kit-Cylinder Head Gasket

S/N 6NZ1-22194

Individual Parts Service Articles Where Used

Price And Availability

Part Number	Part Name	Quantity	Reqd	+ -	i
1 130-9811	Sensor GP-Temperature (Intake Manifold Air)	1	1	+ -	i
2 161-9929 Y	Sensor GP-Pressure (Air)	1	1	+ -	i
3 8T-6763	Plug-Pipe (1/4-18-THD)	1	1	+ -	i
4 224-5122	Gasket (Cylinder Head/Cylinder Head)	1	1	+ -	i
5 160-4347 Y	Cylinder Head GP	1	1	+ -	i
Alternate ^					
Reman					
20R-2645	Head GP-Cyl -Utn	0	0	+ -	i
6 188-7775	Sleeve AS-Exhaust	6	6	+ -	i
7 3E-6772	Seal (Water)	24	24	+ -	i
8 124-1855	BOLT-12 Point Head (3/4-16X7.638-IN)	16	16	+ -	i
8A 5H-1504	Washer-Hard (20X33.5X5-MM THK)	16	16	+ -	i
9 6V-5048	Seal-O-Ring	1	1	+ -	i
10 6V-5049	Seal-O-Ring	5	5	+ -	i

The Reman part number for the Cylinder head is 20R2645.

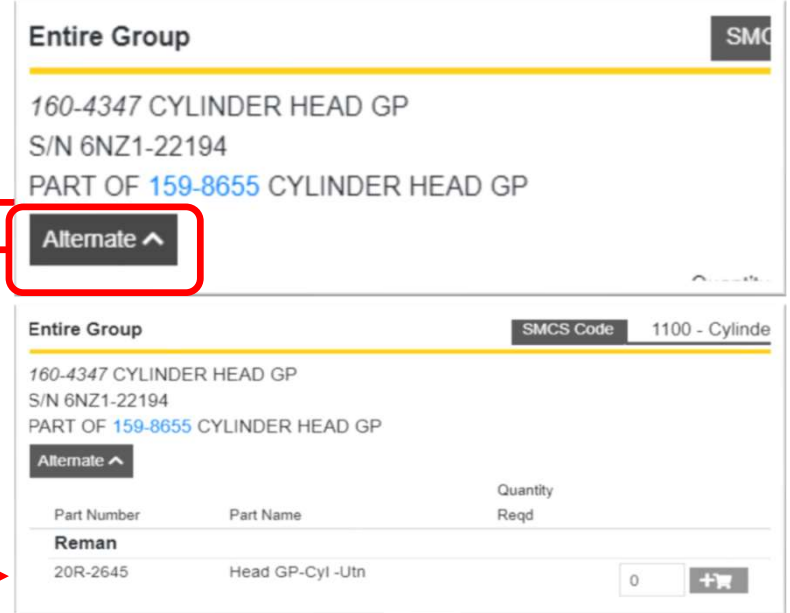
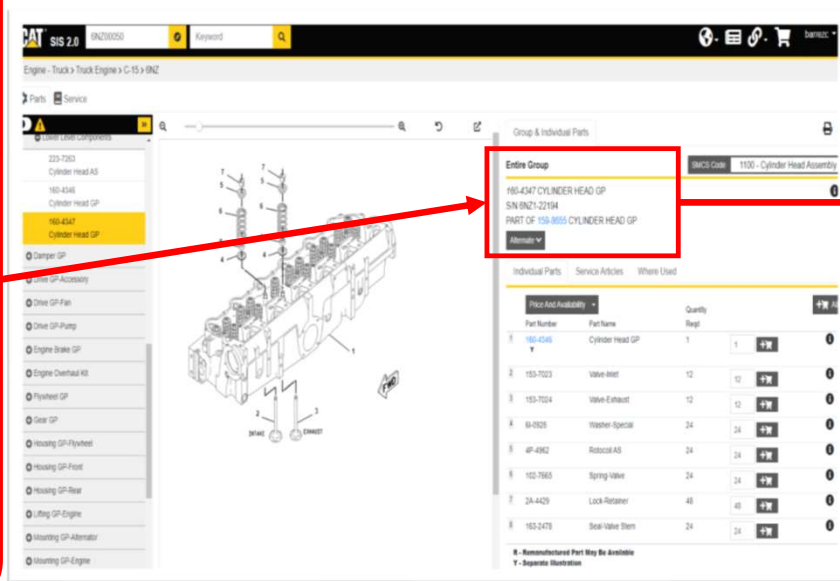
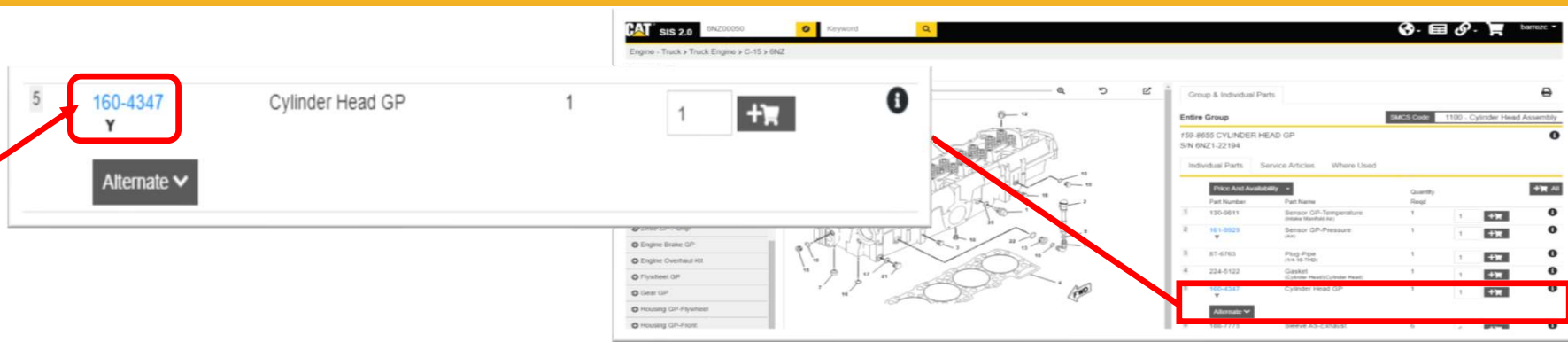
Industrial Power Systems Division

© Proprietary Information of Caterpillar Inc. 2021 - All Rights Reserved

CATERPILLAR®

Clicking the Blue Part number opens that separate illustration.

Clicking Alternate once you have the separate illustration open shown here, will also show you the same part number as before



Industrial Power Systems Division

© Proprietary Information of Caterpillar Inc. 2021 - All Rights Reserved

CATERPILLAR®

15

Clicking Service articles will bring up the information related to that parts group (i.e. Applied Failure Analysis, Disassembly and Assembly, Engine News, Information Release Memo's, etc.)

Engine - Truck > Truck Engine > C-15 > 6NZ

Parts **Service**

Lower Level Components

- 223-7263 Cylinder Head AS
- 160-4346 Cylinder Head GP
- 160-4347 Cylinder Head GP**
- + Damper GP
- + Drive GP-Accessory
- + Drive GP-Fan
- + Drive GP-Pump
- + Engine Brake GP
- + Engine Overhaul Kit
- + Flywheel GP
- + Gear GP
- + Housing GP-Flywheel

Group & Individual Parts

SMCS Code 1100 - Cylinder Head Assembly

Entire Group

160-4347 CYLINDER HEAD GP
S/N 6NZ-22194
PART OF 169-8655 CYLINDER HEAD GP

Alternate ^

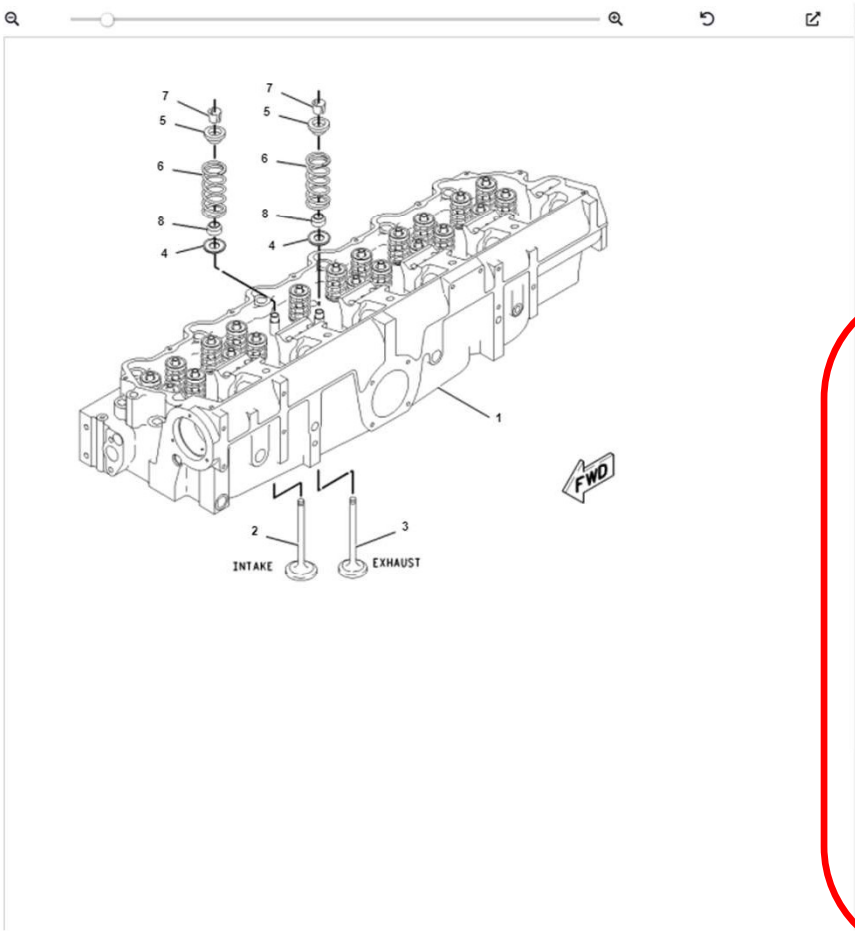
Part Number	Part Name	Quantity	Reqd
Reman			
20R-2645	Head GP-Cyl -Utn	0	+ -

Individual Parts **Service Articles** Where Used

Price And Availability

Part Number	Part Name	Quantity	Reqd
1 160-4346	Cylinder Head GP	1	1 + -

- Lower Level Components
- 223-7263 Cylinder Head AS
 - 160-4346 Cylinder Head GP
 - 160-4347 Cylinder Head GP**
 - Damper GP
 - Drive GP-Accessory
 - Drive GP-Fan
 - Drive GP-Pump
 - Engine Brake GP
 - Engine Overhaul Kit
 - Flywheel GP
 - Gear GP
 - Housing GP-Flywheel
 - Housing GP-Front
 - Housing GP-Rear
 - Lifting GP-Engine
 - Mounting GP-Alternator
 - Mounting GP-Engine
 - Pan GP-Oil
 - Piston & Rod GP
 - Pulley GP
 - Serpentine/v-Belts
 - Suppression GP-Sound
 - Valve Mechanism GP
 - Cooling System
 - Electrical And Starting System



Group & Individual Parts

Entire Group SMCS Code 1100 - Cylinder Head Assembly

160-4347 CYLINDER HEAD GP
S/N 6NZ1-22194
PART OF 159-8655 CYLINDER HEAD GP

Alternate

Part Number	Part Name	Quantity	Reqd
Reman			
20R-2645	Head GP-Cyl-Uln	0	

Individual Parts Service Articles Where Used

Applied Failure Analysis

- Engine Valve Failure MODES(1100, 1105) (SEBF9050)
- Disassembly and Assembly**
- Camshaft Bearings - Install (REN2306)
- Camshaft Bearings - Remove (REN2306)
- Cylinder Head - Install (REN2306)
- Cylinder Head - Remove (REN2306)
- Electronic Unit Injector Sleeve - Install (REN2306)
- Electronic Unit Injector Sleeve - Remove (REN2306)
- Inlet And Exhaust Valve Guides - Remove And Install (REN2306)
- Inlet And Exhaust Valve Seats - Remove And Install (REN2306)
- Inlet And Exhaust Valve Seat Inserts - Remove And Install (REN2306)
- Inlet And Exhaust Valve Springs - Remove And Install (REN2306)
- Inlet And Exhaust Valves - Remove And Install (REN2306)
- Rocker Arm And Shaft - Install (REN2306)
- Rocker Arm And Shaft - Remove (REN2306)
- Engine News**
- Cylinder Head And Spacer Plate Gasket Failures On Certain Engines (1100, 1201) (SEBD9990)
- Information Release Memo**
- Appearance Change On Reman Short Blocks (PELJ1289)
- Caterpillar Reman Cylinder Head Kits For 3406E And C-15 Applications (PELJ0831)
- Lower Cost C-15 & C15 Acert Reman Cylinder Head Options (PELJ1011)
- Operation and Maintenance Manual**
- Cylinder Head Grounding Stud - Inspect/clean/tighten (SEBU7188)
- Engine Valve Lash - Inspect/adjust (SEBU7188)
- Reuse And Salvage Guidelines**
- Engine Valve Failure MODES(1100, 1105) (SEBF9050)
- Reuse & Salvage For Valvetrain Components (1102, 1108, 1109, 1121, 1123) (SEBF8002)
- Reuse And Salvage For Cylinder Head Assemblies (1100, 1101, 1103, 1104, 1105, 1106, 1108, 1109, 1115, 1117, 1121, 1124, 1125) (SEBF8182)
- Using The 6L5328 Valve Train Tester (7774, 8781, 1000, 1100) (SEBF8000)

CAT SIS 2.0 6nz12345 1668307

Engine - Truck > Truck Engine > C-15 > 6N7

Parts Service

Service Information

- Applied Failure Analysis
- Disassembly And Assembly
- Engine News
- General Service Information
- Information Release Memo
- Operation And Maintenance Manual
- Reuse And Salvage Guidelines
- Safety
- Schematic
- Service Letter-Americas
- Service Letter-Apd
- Service Letter-Csarl
- Service Letter-Nacd
- Service Letter-Truck/ag/marine
- Service Magazine
- Special Instruction
- Specifications
- Systems Operation
- Systems Operation - Fundamentals
- Technical Information Bulletin
- Testing And Adjusting
- Tool Operating Manual
- Torque Specifications
- Troubleshooting
- Truck Engine News

Select Service Information from Document Structure to view