

C13 / C15 / C18 Integral and Sub-Base Fuel Tanks

US Sourced
Diesel Generator Set
350 – 750 kW 60 Hz

Picture shown may not represent actual package.

Features

- UL Listed for United States (UL 142) and Canada (CAN/ULC S601)
- Facilitates compliance with NFPA 30 code, NFPA 37 and 110 standards and CSA C282 code
- Dual wall
- Lockable fuel fill cap, 4" (101.6 mm) NPT
- Low fuel level warning standard, customer configurable warning or shutdown
- Primary tank leak detection switch in containment basin
- Tank design provides capacity for thermal expansion of fuel
- Fuel supply dip tube is positioned so as not to pick up fuel sediment
- Fuel return and supply dip tube is separated by an internal baffle to prevent immediate re-supply of heated return fuel
- Pressure washed with an iron phosphate solution
- Interior tank surfaces coated with a solvent-based thin-film rust preventative
- Heavy gauge steel gussets with internal lifting rings
- Primary and secondary tanks are leak tested at 20.7 kPa (3 psi) minimum
- Compatible with open packages and enclosures
- Gloss black polyester alkyd enamel exterior paint
- Welded steel containment basin (minimum of 110% of primary tank capacity)
- Direct reading fuel gauge with variable electrical output
- Emergency vents on primary and secondary tanks are sized in accordance with NFPA 30

Sub-Base

- The Sub-Base fuel tank mounts below the generator set wide base

Integral

- Integral diesel fuel tank is incorporated into the generator set base frame
- Robust base design includes linear vibration isolators between tank base and engine generator

Options

- Audio/visual fuel level alarm panel
- 5 gal (18.9 L) spill containment
- 5 gal (18.9 L) spill containment with fuel fill drop tube with in 6" (152 mm) from bottom of tank
- 5 gal (18.9 L) spill containment with overfill prevention valve and fuel fill drop tube with in 6" (152 mm) from bottom of tank
- ULC Listed 7.5 gal (28.4 L) spill containment with vent extensions, vent whistle, and drop tube facilitating compliance with CSA B139-09
- ULC Listed 7.5 gal (28.4 L) spill containment with overfill prevention valve, vent extensions, vent whistle and drop tube facilitating compliance with CSA B139-09



Integral & Sub-Base Fuel Tank Base Useable Capacities with Fuel Tank Dimensions & Weights

Integral – Width (W) 2014 mm (79.3 in)
 Sub-base – Width (W) 2056 mm (81.0 in)
 Integral* – Width(W) 2315 mm (91.2 in)
 Sub-base* – Width(W) 2357 mm (92.7in)

C13 Tank Design	Feature Code	Total Capacity		Useable Capacity		Tank Only						Overall Package Height with Tank			
		Liter	Gallon	Liter	Gallon	Dry Weight		Height 'H'		Length 'L'		Open		Enclosure	
						kg	lb	mm	in	mm	in	mm	in	mm	in
Integral	FTDW013	2646	699	2540	671	1569	3450	762	30.0	5461	215	2552	100.5	2743	108.0
Sub-Base	FTDW005 / FTDW016	3941	1041	3876	1024	1659	3657	635	25.0	5550	218.5	2763	108.8	2955	116.3
Sub-Base	FTDW006	6980	1844	6818	1801	2228	4483	889	35.0	6184	243.5	3017	118.8	3209	126.3
Sub-Base	FTDW007	8339	2203	8244	2178	2150	5052	889	35.0	7074	278.5	2291	117.8	3789	149.2
Sub-Base	FTDW011	2476	654	2435	643	1468	3236	635	25.0	3810	150.0	2763	108.8	2955	116.3

C15 Tank Design	Feature Code	Total Capacity		Useable Capacity		Tank Only						Overall Package Height with Tank			
		Liter	Gallon	Liter	Gallon	Dry Weight		Height 'H'		Length 'L'		Open		Enclosure	
						kg	lb	mm	in	mm	in	mm	in	mm	in
Integral	FTDW002	1283	339	1262	333	1015	2237	635	25.0	3814	150.1	2426	95.5	2619	103.0
Sub-Base	FTDW005 / FTDW016	3941	1041	3876	1024	1659	3657	635	25.0	5550	218.5	2763	108.8	2955	116.3
Sub-Base	FTDW006	6980	1844	6818	1801	2228	4912	889	35.0	6184	243.5	3017	118.8	3209	126.3
Sub-Base	FTDW008	2476	654	2435	643	1468	3236	635	25.0	3810	150.0	2763	108.8	2955	116.3
Sub-Base	FTDW034	10887	2876	9899	2615	2847	6277	914	36	7747	305	3043	119.8	3233	127.3

C18 Tank Design	Feature Code	Total Capacity		Useable Capacity		Tank Only						Overall Package Height with Tank			
		Liter	Gallon	Liter	Gallon	Dry Weight		Height 'H'		Length 'L'		Open		Enclosure	
						kg	lb	mm	in	mm	in	mm	in	mm	in
Integral	FTDW004	1446	382	1422	376	1015	2237	635	25.0	3814	150.1	2426	95.5	2560	100.8
Integral*	FTDW030	2498	660	2381	629	1681	3703	762	30.0	4995	196.6	2670	105.1	2675	105.3
Integral*	FTDW031	5175	1367	4997	1320	2046	4510	762	30.0	6737	265.3	2670	105.1	2675	105.3
Sub-Base	FTDW005 / FTDW016	3941	1041	3876	1024	1659	3657	635	25.0	5550	218.5	2763	108.8	2955	116.3
Sub-Base	FTDW007	8339	2203	8244	2178	2150	4134	889	35.0	7074	278.5	2291	117.8	3159	124.4
Sub-Base	FTDW008	2476	654	2435	643	1468	3236	635	25.0	3810	150.0	2739	107.9	2905	114.4
Sub-Base*	FTDW032	10228	2702	10112	2640	2638	5816	889	35.0	7368	290	3127	123.1	3132	123.3

*For Ratings 650, 700 & 750 kW only

Integral & Sub-Base Fuel Tank Base Useable Capacities with Fuel Tank Dimensions & Weights

Integral - Width(W) 2014 mm (79.3 in)

Sub-base - Width(W) 2056 mm (81 in)

Integral* - Width(W) 2315 mm (91.2 in)

Sub-base*-Width(W) 2357 mm (92.7in)

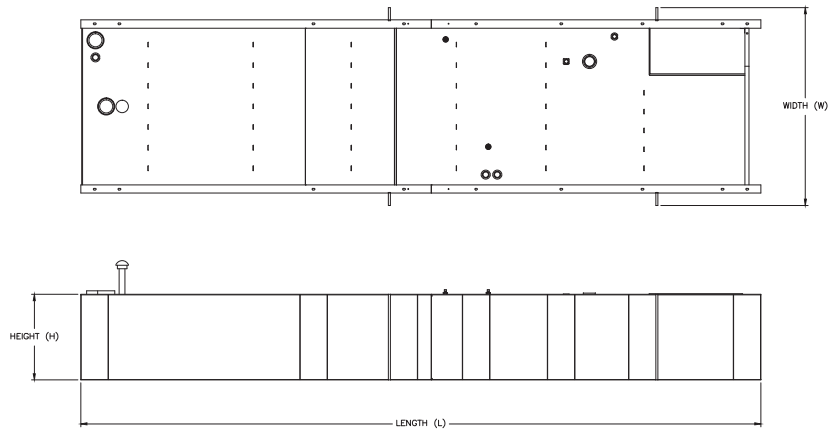
Sound Attenuated Enclosure

C13 Tank Design	Feature Code	Total Capacity		Useable Capacity		Tank Only						Overall Package Height with Tank			
						Dry Weight		Height 'H'		Length 'L'		Open		Enclosure	
		Liter	Gallon	Liter	Gallon	kg	lb	mm	in	mm	in	mm	in	mm	in
Integral	FTDW013	2646	699	2540	671	1569	3450	762	30.0	5461	215.0	NA	NA	2743	108.0
Sub-Base	FTDW005 / FTDW016	3941	1041	3876	1024	1659	3657	635	25.0	5550	218.5	NA	NA	2955	116.3
Sub-Base	FTDW006	6980	1844	6818	1801	2033	4483	889	35.0	6184	243.5	NA	NA	3209	126.3
Sub-Base	FTDW007	8339	2203	8244	2178	2292	5052	889	35.0	7074	278.5	NA	NA	3209	126.3
Sub-Base	FTDW011	2476	654	2435	643	1468	3236	635	25.0	3810	150.0	NA	NA	2955	116.3

C15 Tank Design	Feature Code	Total Capacity		Useable Capacity		Tank Only						Overall Package Height with Tank			
						Dry Weight		Height 'H'		Length 'L'		Open		Enclosure	
		Liter	Gallon	Liter	Gallon	kg	lb	mm	in	mm	in	mm	in	mm	in
Integral	FTDW001	1283	339	1262	333	1015	2237	639	25.0	4746	186.9	NA	NA	2619	103.0
Sub-Base	FTDW005 / FTDW016	3941	1041	3876	1024	1659	3657	635	25.0	5550	218.5	NA	NA	2955	116.3
Sub-Base	FTDW006	6980	1844	6818	1801	2228	4912	889	35.0	6184	243.5	NA	NA	3209	126.3
Sub-Base	FTDW011	2476	654	2435	643	1468	3236	635	25.0	3810	150.0	NA	NA	2955	116.3
Sub-Base	FTDW034	10887	2876	9899	2615	2847	6277	914	36	7747	305	NA	NA	3233	127.3

C18 Tank Design	Feature Code	Total Capacity		Useable Capacity		Tank Only						Overall Package Height with Tank			
						Dry Weight		Height 'H'		Length 'L'		Open		Enclosure	
		Liter	Gallon	Liter	Gallon	kg	lb	mm	in	mm	in	mm	in	mm	in
Integral	FTDW003	1446	382	1422	376	1015	2237	635	25.0	3814	150.1	NA	NA	2560	100.8
Integral*	FTDW030	2498	660	2381	629	1681	3703	762	30.0	4995	196.6	2670	105	2675	105.3
Integral*	FTDW031	5175	1367	4997	1320	2046	4510	762	30.0	6737	265.3	NA	NA	2675	105.3
Sub-Base	FTDW005 / FTDW016	3941	1041	3876	1024	1659	3657	635	25.0	5550	218.5	NA	NA	2905	114.3
Sub-Base	FTDW007	8339	2203	8244	2178	2150	4134	889	35.0	7074	278.5	NA	NA	3209	126.3
Sub-Base	FTDW011	2476	654	2435	643	1468	3236	635	25.0	3810	150.0	NA	NA	2905	114.3
Sub-Base*	FTDW032	10228	2702	9994	2640	2638	5816	889	35.0	7368	290	NA	NA	3132	123.3

*For Ratings 650, 700 & 750 kW only



The heights listed above do not include lumber used during manufacturing and shipping.

Estimated Run Times (Hours) at 100% Load

C13 Tank Design	Feature Code	Standby Ratings (ekW)				Prime Ratings (ekW)			
		400	350	-	-	350	320	-	-
Integral Tank	FTDW013	24	27	-	-	25	29	-	-
Sub-Base	FTDW005 / FTDW016	36	41	-	-	38	43	-	-
Sub-Base	FTDW006	65	72	-	-	72	77	-	-
Sub-Base	FTDW007	77	87	-	-	81	93	-	-
Sub-Base	FTDW011	23	25	-	-	24	27	-	-

C15 Tank Design	Feature Code	Standby Ratings (ekW)				Prime Ratings (ekW)			
		500	450	400	350	455	410	365	320
Integral Tank	FTDW001 / FTDW002	9	9	11	11	10	10	11	12
Sub-Base	FTDW005 / FTDW016	28	29	32	36	30	31	35	38
Sub-Base	FTDW006	50	52	57	63	54	56	62	67
Sub-Base	FTDW008 / FTDW011	17	18	20	22	19	20	22	24
Sub-Base	FTDW034	72	75	82	91	78	81	90	97

C18 Tank Design	Feature Code	Standby Ratings (ekW)					Prime Ratings (ekW)				
		750	700	650	600	550	680	635	600	545	500
Integral	FTDW003 / FTDW004	-	-	-	8	9	-	-	-	9	10
Integral*	FTDW030	11	12	13	-	-	12	13	14	-	-
Integral*	FTDW031	24	25	27	-	-	26	27	29	33	36
Sub-Base	FTDW005 / FTDW016	-	-	-	24	25	-	-	-	25	27
Sub-Base	FTDW007	-	-	-	51	54	-	-	-	54	59
Sub-Base	FTDW008 / FTDW011	-	-	-	15	16	-	-	-	16	17
Sub-Base*	FTDW032	49	51	54	-	-	53	55	58	-	-

*For Ratings 650, 700 & 750 ekW only

Tanks with full electrical stub-up area include removable end channel. Tanks with RH stub-up include stub-up area directly below the circuit breaker or power terminal strips. Dimensions include weather-protective enclosure exhaust system.

Dual wall sub-base tanks are UL Listed and constructed in accordance with UL Standard for Safety UL 142, Steel Aboveground Tanks for Flammable and Combustible Liquids and Canada CAN/ULC S601, Standard for Shop Fabricated Steel Aboveground Horizontal Tanks for Flammable and Combustible Liquids.

Fuel tanks and applicable options facilitate compliance with the following United States NFPA Code and Standards:

NFPA 30: Flammable and Combustible Liquids Code

NFPA 37: Standard for the Installation and Use of Stationary Combustion Engines and Gas Turbines

NFPA 110: Standard for Emergency and Standby Power Systems

Fuel tanks and applicable options facilitate compliance with the following Canadian Standard and Code:

CSA C282 – Emergency Electrical Power Supply for Buildings

CSA B139-09 - Installation Code for Oil-Burning Equipment

The following sub-base fuel tanks meet Chicago code for containment and labelling:

FTDW005

FTDW008

FTDW011

©2021 Caterpillar
All rights reserved.

Materials and specifications are subject to change without notice.

The International System of Units (SI) is used in this publication.
CAT, CATERPILLAR, LET'S DO THE WORK, their respective logos, "Caterpillar Corporate Yellow" the "Power Edge" and Cat "Modern Hex" trade dress as well as corporate and product identity used herein, are trademarks of Caterpillar and may not be used without permission.