

**TABLE 1 - LIFT/FLEX/FUEL POINTS**

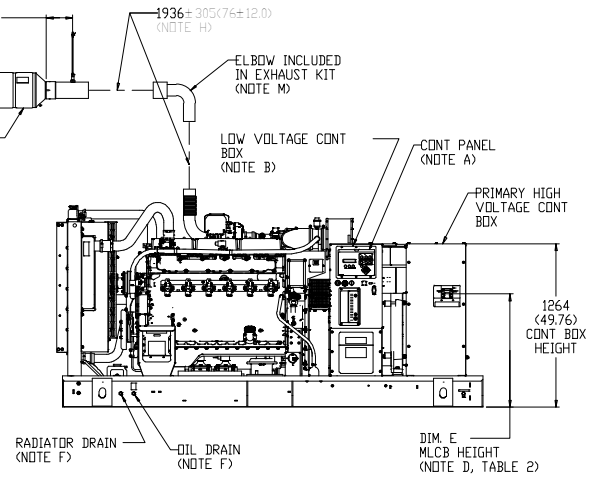
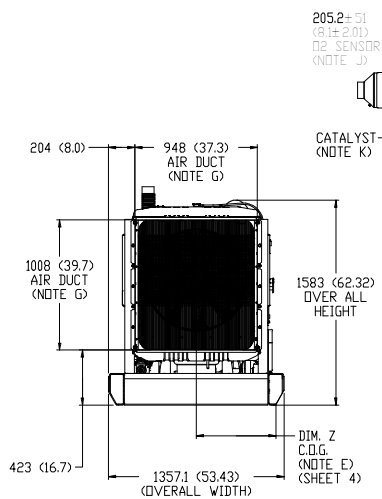
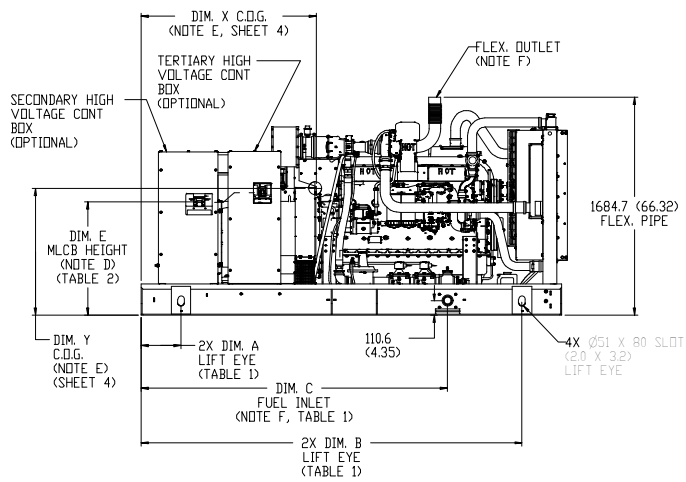
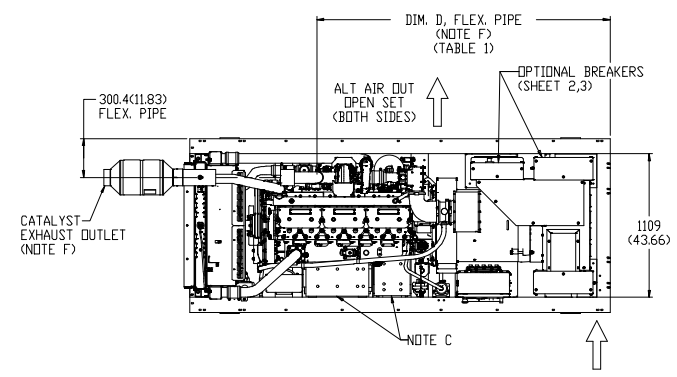
DIM.	OPEN SET, LEVEL 1, LEVEL 2	LEVEL 3
A	307 (121)	731 (288)
B	2,943 (116)	3534 (1391)
C	2,365 (93.1)	2626 (103.4)
D	2,269 (89.3)	2537 (99.9)

NOTE: OPEN SET FRAME SHOWN

**TABLE 2 - MLCB HEIGHTS**

DIM.	STANDARD (DG)	SECONDARY (DG)	TERTIARY (DG)
E	832 (32.8)	832 (32.8)	945 (37.2)

NOTE:  
 1) THREE OPTIONAL BREAKERS SHOWN  
 2) MLCB HEIGHT MAY VARY BASED ON AMPERAGE SIZE



120V, 20A GFCI & 250V, 15A OUTLET (OPTIONAL).  
 AUXILIARY AC CONNECTION FOR UNIT OPTIONS ARE LOCATED IN HIGH VOLTAGE CONNECTION BOX.  
 BOTTOM OF GENERATOR SET MUST BE ENCLOSED TO PREVENT PEST INTRUSION AND RECIRCULATION OF DISCHARGE AIR AND/OR IMPROPER COOLING AIR FLOW. CONNECT THE OPEN SET EXHAUST PER NFPA 37.  
 BLANKETS SHOULD NOT COVER OXYGEN SENSOR.  
 DIMENSIONS ARE IN MILLIMETERS (INCHES).  
 POWER RANGE: 10175-10200

NOTE G: GENERATOR SET MUST BE INSTALLED SUCH THAT FRESH COOLING AIR IS AVAILABLE AND DISCHARGE AIR FROM THE RADIATOR IS NOT RECIRCULATED.  
 NOTE H: INSTALL EXHAUST BLANKETS ALONG THIS LINE. CATALYST TO BE PLACED THIS DISTANCE FROM TURBO FLANGE. (BLANKETS SUPPLIED BY OTHERS)  
 NOTE J: OXYGEN SENSOR (IF EQUIPPED) MUST BE MOUNTED BETWEEN ENGINE OUTLET AND CATALYST INLET AS SHOWN. IF ELBOW IS REQUIRED ONLY ONE ELBOW MAY BE USED.  
 NOTE K: CATALYST MUST BE MOUNTED IN VERTICAL OR HORIZONTAL POSITION FAILING TO FOLLOW THESE INSTRUCTIONS WHEN INSTALLING A CERTIFIED ENGINE IN A PIECE OF STATIONARY EQUIPMENT VIOLATES FEDERAL LAW 40CFR 1068.105(a), SUBJECT TO FINES OR PENALTIES AS DESCRIBED IN THE CLEAN AIR ACT.  
 NOTE L: BOLTS OR STUDS USED TO MOUNT UNIT TO PAD SHALL BE 5/8 - 11 GRADE 5.  
 NOTE M: SEE SILENCER EXPLODED VIEW FOR ASSEMBLY LAYOUT.

NOTE A: CONTROL PANEL, (EXTERNAL BATTERY CHARGER).  
 NOTE B: CONNECTION POINTS FOR CONTROL WIRES PROVIDED IN THE LDW VOLTAGE CONNECTION BOX (USE LDW VOLTAGE STUB-UP AREA).  
 NOTE C: BATTERY (24 VOLT NEGATIVE GROUND SYSTEM).  
 NOTE D: MAIN LINE CIRCUIT BREAKER (MLCB), AC LOAD LEADS. (DIMENSIONS MAY VARY DUE TO UNIT CONFIGURATION).  
 NOTE E: CENTER OF GRAVITY AND WEIGHT MAY CHANGE DUE TO UNIT OPTIONS.  
 NOTE F: ENGINE SERVICE CONNECTIONS:  
 INLET NATURAL GAS = 20" NPT  
 OIL DRAIN = 1/2" NPT  
 RADIATOR DRAIN = 1/2" NPT  
 FLEXIBLE PIPE OUTLET = 35°  
 CATALYST OUTLET = 30°  
 \*\*\*\*\* SEE GENERATOR SIZING GUIDE FOR FUEL PIPE SIZING TO SUIT APPLICATION \*\*\*\*\*

(SCALE: 1:30)

1			
2			
3			
4			
5			
6			
7			
8			

1	1E5167A	INT-PROP
2	1E2966B	IDENT
3	1E2722D	DRAWING
4	1E0198V	BRAND MARKINGS
5	1E0037	CONFIDENTIALITY
6	1E0024	INTERPRETATION
7	1E0011	INT'PR & IOL
8	1	Caterpillar: Confidential Yellow

SALES OFFICER SPECIFIED BY CUSTOMER  
 DIMENSIONS IN INCHES UNLESS OTHERWISE SPECIFIED  
 DIMENSIONS IN MM UNLESS OTHERWISE SPECIFIED  
 TYPICAL DIMENSIONS  
 THIRD ANGLE PROJECTION  
 SHEET 1 OF 4  
 DATE: 11/9/23  
**CATERPILLAR**  
 14.2 L OPEN  
 555-6993 04