

TABLE 1 - LIFTING POINTS

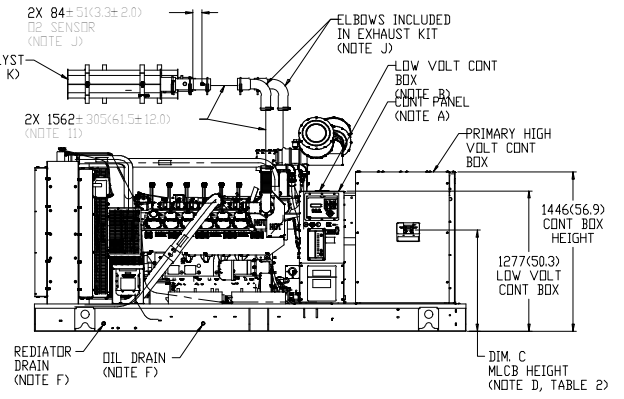
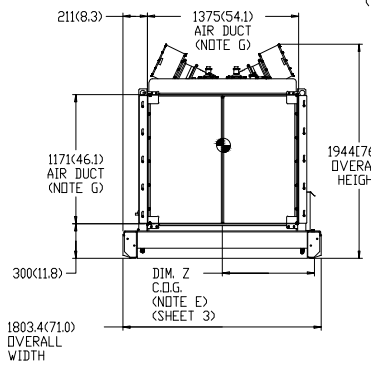
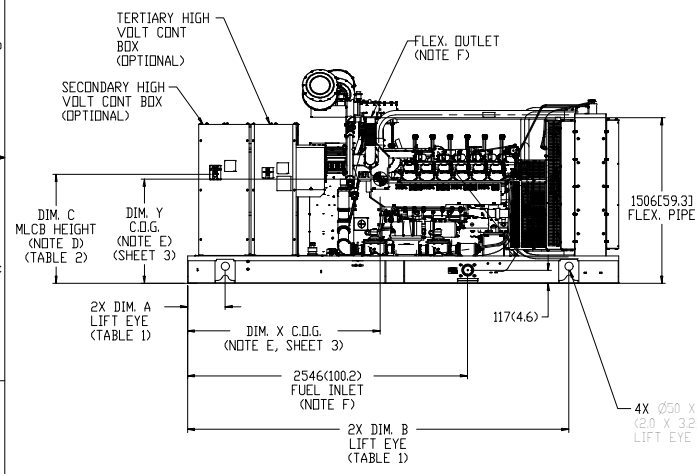
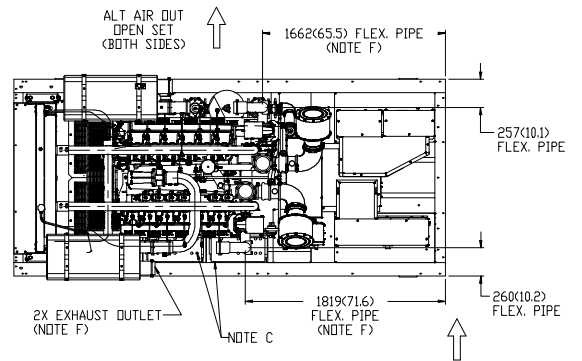
DIM.	OPEN SET & LEVEL 1 & 2	LEVEL 2
A	341 (13.4)	731 (28.8)
B	3466 (136.5)	3547 (139.6)

NOTE: OPEN SET FRAME SHOWN

TABLE 2 - MLCB HEIGHTS

DIM.	STANDARD (DG)	SECONDARY (DG)	TERTIARY (DG)
C	921 (36.3)	990 (39.0)	990 (39.0)

NOTES:
 1) TWO OPTIONAL BREAKERS SHOWN
 2) MLCB HEIGHT MAY VARY BASED ON AMPERAGE SIZE



120V, 20A GFI & 250V, 15A OUTLET (OPTIONAL).
 AUXILIARY AC CONNECTION FOR UNIT OPTIONS ARE LOCATED IN HIGH VOLTAGE CONNECTION BOX.
 BOTTOM OF GENERATOR SET MUST BE ENCLOSED TO PREVENT PEST INTRUSION AND RECIRCULATION OF DISCHARGE AIR AND/OR IMPROPER COOLING AIR FLOW.
 CONNECT THE OPEN SET EXHAUST PER NFPA 37.
 BLANKETS SHOULD NOT COVER OXYGEN SENSOR.
 SEE SILENCER EXPLODED VIEW FOR ASSEMBLY LAYOUT.
 DIMENSIONS ARE IN MILLIMETERS (INCHES)
 POWER RANGE: DG350-DG450

NOTE G: GENERATOR SET MUST BE INSTALLED SUCH THAT FRESH COOLING AIR IS AVAILABLE AND DISCHARGE AIR FROM THE RADIATOR IS NOT RECIRCULATED.
 NOTE H: INSTALL EXHAUST BLANKETS ALONG THIS LINE. CATALYST TO BE PLACED THIS DISTANCE FROM TURBO FLANGE. (BLANKETS SUPPLIED BY OTHERS)
 NOTE J: OXYGEN SENSOR (IF EQUIPPED) MUST BE MOUNTED BETWEEN ENGINE OUTLET AND CATALYST INLET AS SHOWN. IF ELBOW IS REQUIRED ONLY ONE ELBOW MAY BE USED.
 NOTE K: CATALYST MUST BE MOUNTED IN VERTICAL OR HORIZONTAL POSITION FAILING TO FOLLOW THESE INSTRUCTIONS WHEN INSTALLING A CERTIFIED ENGINE IN A PIECE OF STATIONARY EQUIPMENT VIOLATES FEDERAL LAW 40CFR 106.105(d), SUBJECT TO FINES OR PENALTIES AS DESCRIBED IN THE CLEAN AIR ACT.
 NOTE L: BOLTS OR STUDS USED TO MOUNT UNIT TO PAD SHALL BE 5/8 - 11 GRADE 5.

NOTE A: CONTROL PANEL, (EXTERNAL BATTERY CHARGER).
 NOTE B: CONNECTION POINTS FOR CONTROL WIRES PROVIDED IN THE LOW VOLTAGE CONNECTION BOX (USE LOW VOLTAGE STUB-UP AREA).
 NOTE C: BATTERY (24 VOLT NEGATIVE GROUND SYSTEM).
 NOTE D: MAIN LINE CIRCUIT BREAKER (M.C.B.), AC LOAD LEADS. (DIMENSIONS MAY VARY DUE TO UNIT CONFIGURATION)
 NOTE E: CENTER OF GRAVITY AND WEIGHT MAY CHANGE DUE TO UNIT OPTIONS.
 NOTE F: ENGINE SERVICE CONNECTIONS
 INLET NATURAL GAS = 3/8" NPT
 OIL DRAIN = 1/2" NPT
 RADIATOR DRAIN = 1/2" NPT
 FLEXIBLE PIPE OUTLET = 3/8" ANSI CLASS 125#/150#
 CATALYST OUTLET = 50# ANSI CLASS 125#/150#
 ***** SEE GENERATOR SIZING GUIDE FOR FUEL PIPE SIZING TO SUIT APPLICATION *****

1			
2			
3			
4			
5			
6			
7			
8			

1E5167A	INT-PROP
1E2966B	IDENT
1E2722D	DRAWING
1E0198V	BRAND MARKINGS
1E0037	CONFIDENTIALITY
1E0024	INTERPRETATION
1E0001	INT'PR & TOL
1	Caterpillar: Confidential Yellow
1	From RECORDED
1	SALES SPECIFIC SPECIFICATIONS
1	APPROVED BY: [Signature]
1	DATE: 11/22/23
1	THIRD ANGLE PROJECTION
1	SHEET 1 OF 3
1	555-7003
1	21.9 L OPEN V / WEG ALT
1	555-7003 03

(SCALE: 1:30)