

POWERING FOR YOUR FUTURE

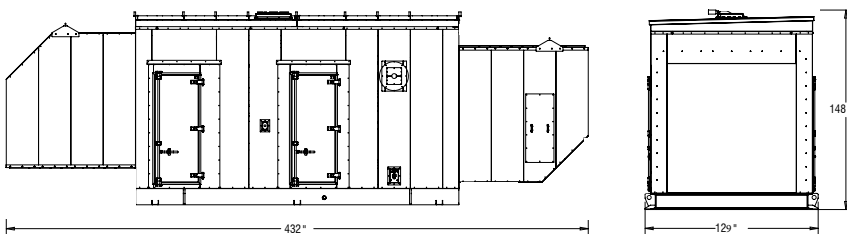


CAT® G3512 CONTAINERIZED SOLUTIONS

Our capabilities and power generation experience help us build market-leading products for our customers – from sales support and conceptual design, to detailed design and production, to lifetime support for your Cat® power solution. Cat G3512 containerized solutions are tailored with attachments and performance options to match your specific application, delivering a factory-tested 480 - 4160V power generation package backed by a full Caterpillar warranty.

When purchased as a containerized solution, Caterpillar integrates the generator set controllers and programmable logic controller (PLC) into one seamless, modular design with the ability to witness test the complete integrated package.

The weather-proof protective enclosure is built with a sound-attenuated level of 75 dB (A) per SAE J1074 and comes completely assembled minimizing on-site installation.



Certifications



UL 2200, UL 1446



NFPA 110, NFPA 37, NFPA 70



CSA 282-00, CSA B149.3,
CSA Class 4215 01, CSA 22.2



ISO 8528-1, ISO 8528-2, ISO
8528-3, ISO 8528-5, ISO 9001,
ISO 3046



IEC 60034 (IP-22)



NEMA MG1

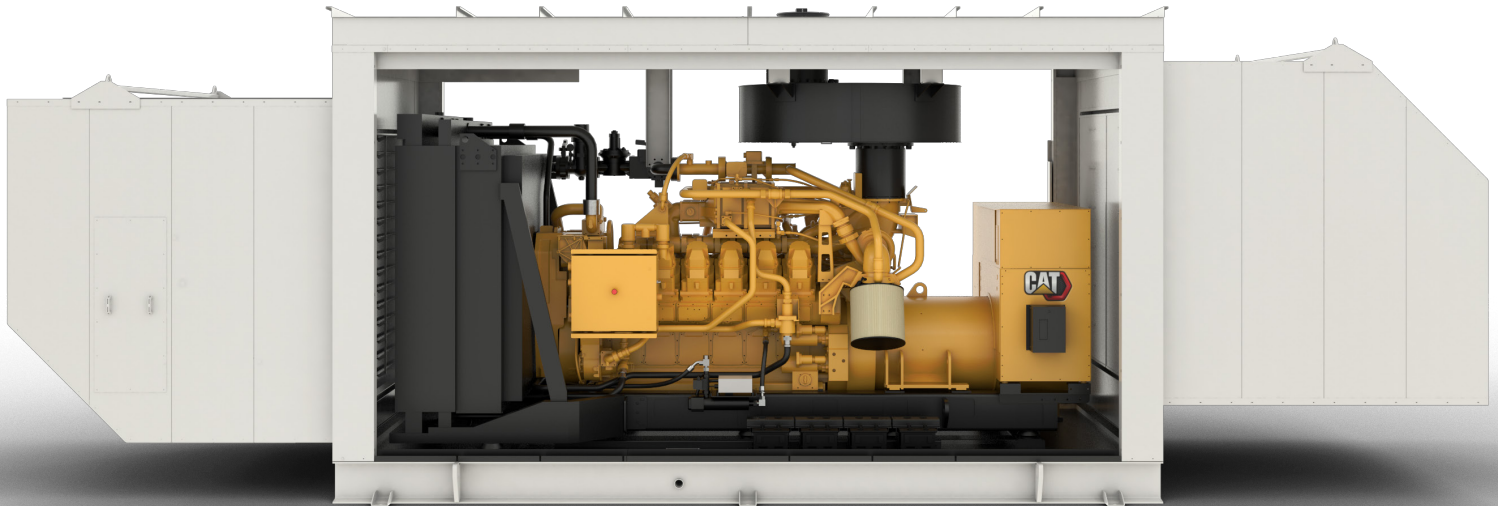


EPA Certified

A COMPLETE SOLUTION

ENGINE

	750ekW	1000ekW
Fuel Consumptions – 100% load – Btu/ekW-hr	10282	9757
Genset efficiency – %	33.8%	35.6%
Engine Speed – RPM	1800	1800
Bore/stroke – mm(in)	170 (6.7)	170 (6.7)
Displacement – L (in ³)	52 (3173)	52 (3173)
Compression Ratio	9.7	9.7



PERFORMANCE

U.S. EPA Stationary Non-Emergency certified for use in emergency and non-emergency applications. NFPA 110 Type 10 compliant, ready to accept load in 7.5 seconds. Compliant with ISO 8528-5 G3 load acceptance criteria, accepting 100% block load in one step.

CONTROLS

The EMCP4.3 control panel is installed with left or right side service on package. Comes standard with customizable 12 digital inputs and 16 outputs. EMCP4.4 is an optional add-on, eliminating the need for additional switchgear when paralleling with the grid or other generator sets.

ELECTRICAL

Our solutions come complete with a house electrical connection box, 120VAC LED lights, 2 emergency stops and batteries. Optional breakers, power outlets and wiring can be added upon request.

ANCILLARY EQUIPMENT

Designed to work with your Cat generator set, we include heavy duty air intake filters, complete natural gas fuel train, exhaust silencer systems, exhaust aftertreatment and more.

COOLING EQUIPMENT

The container comes complete with an installed radiator designed to operate in ranges from -40°C to +43°C.

WORLDWIDE PRODUCT SUPPORT

Cat dealers have over 1,800 dealer branch stores operating in 200 countries. Your local Cat dealer provides extensive post-sale support, including service agreements with Remote Asset Monitoring through Cat Connect. When your power is critical, Cat dealers are there with 24/7 customer support, preventative maintenance, customer training, protective parts stocking and extended service coverage.

For your nearest dealer, visit cat.com/powergeneration.

LET'S DO THE WORK.™

LEYE0032 July 2019
© 2019 Caterpillar. All Rights Reserved. CAT, CATERPILLAR, LET'S DO THE WORK, their respective logos, "Caterpillar Yellow," the "Power Edge" and Cat "Modern Hex" trade dress, as well as corporate and product identity used herein, are trademarks of Caterpillar and may not be used without permission.

